

> BOZEMAN SILVERSTRIPE SECURE VAULT

★ 30

\$. /vaultbreaker...

GOVERNMENT 2

\$ >\_HKT MEM -D0D000

\$ [→BYP] SYS -BADDED

\$ [BRK] KEY -C0C0A0

DATA LINK



+1



GRID: [0x7F-1A]

> "Breaking through the layers of security. Breach imminent."

Commercial

149897DD-7553-5733-A7B0-E390F03C5992

> CITY HALL DATA GRID

★ 100

\$. /audit\_log.sh

GOVERNMENT 6

\$ [CRK] NET -1CE0FF

\$ [BRK] SYS -DEFEC7

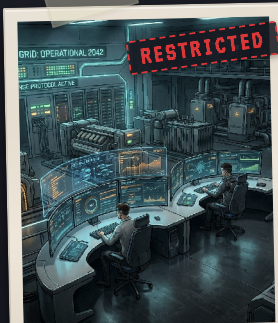
\$ [→BYP] SYS -BEEF00

\$ >\_HKT NET -1CE0FF

SYS-ALERT



+5



LEAK: VOTE RESULTS

> "Rooting deep, bypassing safeguards. Trust no one."

Critical Infrastructure

163E61EE-1D32-5F95-980D-4E9700F84DFB

> BROADWAY SUBNET

★ 30

\$. /network...

AI INTELLIGENCE 2

\$ [→BYP] SYS -AUTH00

\$ [CRK] SYS -EFFEC7

\$ >\_HKT NET -A11CE0

DATA LINK



+1



BROADWAY: WATCH ...

> "Fractured nodes. Zero-day vectors."

Commercial

17013483-6EB9-5EC0-BC19-79F88985F009

> BROADWAY QUANTUM SUBNET

★ 27

\$. /encrypt...

AI INTELLIGENCE 2

\$ [→BYP] NET -D4EAD0

\$ [CRK] KEY -KEY000

DATA LINK



+1



Quantum keys, beware

> "Breaking through the quantum defenses. Trust in the algorithm."

Commercial

1ED5079B-1278-5212-892D-92FE830F4CDC

# > BOZEMAN HOSPITAL NEURAL ARRAY

★ 52

\$. /neural...



AI INTELLIGENCE

3

\$

>\_HKT



NET -FACE42

\$

>\_HKT

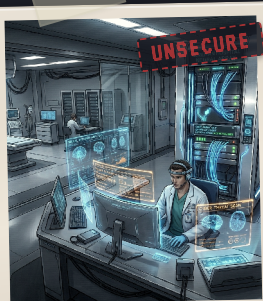


KEY -CORE00

DATA-LINK



+2



GRID: [0x4B-2F]

> "Silent servers hum, secrets stored in neural nets. Crack the code and find what lies hidden."

Healthcare

103810D9-DED8-5322-9F9F-71BD35BE7025

# > BROADWAY CHIRON SECURE VAULT

★ 30

\$. /firewall.sh



GOVERNMENT

2

\$

>\_HKT



NET -EFFEC7

\$

[→BYP



SYS -B01CE0

\$

⚡CRK



MEM -D4T400

\$

⚡CRK



KEY -CAFE42

DATA-LINK



+1



GRID: [0xTE-BA]

> "Breaking through层层防护, 掌握关键数据"

Commercial

1F237CA3-DEEE-5256-9B12-CC3AC524E698

# > BOZEMAN CRYO-HQ ARRAY

★ 27

\$. /cryogen...



AI INTELLIGENCE

2

\$

>\_HKT



NET -COFFEE

\$

>\_HKT



SYS -CODE00

DATA-LINK



+1



NEEDS CODE: THAW

> "Silent servers hum. Core secrets chill."

Commercial

143B58CB-1C55-57AD-B8AB-E198683D3539

# > SILVERSTRIPE SUB-ZERO GRID

★ 95

\$. /intrusi...



AI INTELLIGENCE

6

\$

[→BYP



SYS -B4SE00

\$

⚡CRK



MEM -BEEFED

\$

>\_HKT



ACC -0FF000

SYS-ALERT



+5



SILVERSTRIPE: WAT...

> "Silent servers hum. Passwords flicker like neon."

Critical Infrastructure

1921011A-D0F0-5CBE-BBEA-124513200461

> BOZEMAN CRYO-NEURAL CORE

★ 30

\$. /neural... AI INTELLIGENCE 2

\$ BRK NET -F00D42  
\$ [→]BYP SYS -DECODE  
\$ BRK SYS -DECODE

DATA-LINK

+1



GRID: [0x7E-C2]

> "The neural nodes hum with cryptic codes. The air is cold, but not as cold as the secrets they hold."

Commercial

1577D0AF-649F-58EB-BC57-1BDD19181B32

> BOZEMAN BROADWAY GOVERNMENT SUBNET

★ 75

\$. /govnet.sh GOVERNMENT 5

\$ [→]BYP SYS -COFFEE  
\$ CRK KEY -CAFE00  
\$ [→]BYP NET -CAFE00

SECURE-CH

+4



WHY DID THEY CALL ...

> "Silencing the whispering wires securing Bozeman's future. The heart of governance, now exposed."

Government

1A7A2CAF-810A-565B-8A18-82679618C27B

> SILVERSTRIPE CANYON AEGIS SUBNET

★ 30

\$. /firewall.sh GOVERNMENT 2

\$ CRK KEY -ACCE55  
\$ >\_HKT SYS -B0B000  
\$ BRK SYS -COFFEE  
\$ CRK SYS -BADDED

DATA-LINK

+1



GRID: [0xB4-6F]

> "The canyon whispers secrets. The subnet hums with life."

Commercial

1BF5DB2C-683E-5816-9755-EF6ED02F1ECF

> BOZEMAN BROADWAY GOVERNMENT MAINFRAME

★ 75

\$. /govnet.sh GOVERNMENT 5

\$ BRK SYS -CORE00  
\$ CRK SYS -4CCE55  
\$ >\_HKT SYS -DEFEC7

SECURE-CH

+4



GRID: [D2F-C93]

> "Breaking through the city's heart, where secrets are stored. Avoid the latest security updates or risk shutdown."

Government

1F584288-D5CC-5229-92B7-0590FC0872C6



> BOZEMAN SUBURBS QUANTUM NODE

★ 30

\$. /subnet\_scanne...

GOVERNMENT

2

\$. ⚡ CRK ⚙️ SYS -DEAD01

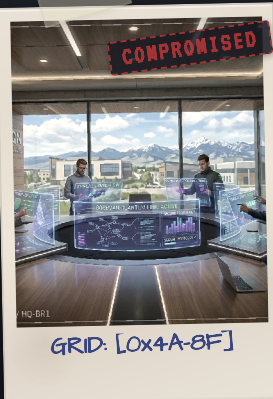
\$. 🔒 BRK ⚙️ SYS -B01CE0

\$. >\_HKT ⚙️ SYS -D4T400

DATA LINK



+1



> "Wiring through the suburban underbelly. The signal is weak, but we're close."

Commercial

14D5D06F-6705-5502-B77F-BF42E4C7D670

> BROADWAY CANYON WYOMING ARCHIVE

★ 30

\$. /archive.sh

GOVERNMENT

2

\$. 🔒 BRK ⚙️ SYS -B0B000

\$. >\_HKT ⚙️ SYS -D0D000

\$. ⚡ CRK ⚙️ SYS -FEED00

DATA LINK



+1



> "Corrupted backups hint at a dark history. Be careful what you uncover."

Commercial

109213A4-57D1-5078-A350-FD06ABF6E5D3

> BOZEMAN CANYON CHIRON SUBNET

★ 27

\$. /subnet.sh

GOVERNMENT

2

\$. 🔒 BRK ⚙️ SYS -BADD00

\$. >\_HKT ⚙️ SYS -CAFE00

DATA LINK



+1



> "Breaking through the Canyon's data defenses. Secure access or face the breach."

Commercial

1FBF6830-63F0-5F5D-8F35-71487CB57B4B

> BOZEMAN BROADWAY CHIRON ARCHIVE

★ 30

\$. /archive.sh

GOVERNMENT

2

\$. >\_HKT ⚙️ SYS -FACEB0

\$. 🔒 BRK ⚙️ SYS -DEADBE

\$. ⚡ CRK ⚙️ SYS -DECODE

DATA LINK



+1



> "Silent hum of servers. Echoes of forgotten files."

Commercial

110B4B45-CD4D-5B6D-9B52-97FF5A49D6E8



> BOZEMAN BROADWAY BIOSAFETY VAULT

★ 27

\$ ./biosafety.sh

GOVERNMENT

2

\$

>\_HKT

⚙️ SYS -AUTH00

\$

⚡ CRK

⚙️ SYS -BEEF01

DATA LINK



+1



GRID: [0x4B-CA]

> "Neural codes intertwine, secure vaults await. Breach them all or become the data."

Commercial

15768938-DE2A-5372-A51F-3717B233F3CC

> BOZEMAN CANYON HORIZON MAINFRAME

★ 27

\$ ./horizon\_prote...

GOVERNMENT

2

\$

>\_HKT

⚙️ SYS -EFFEC7

\$

⚡ CRK

⚙️ SYS -CODE77

DATA LINK



+1



GRID: [0x7E-CA]

> "Zero-day exploits whisper through the canyon.\nNo one leaves this vault unchanged."

Commercial

1441CA89-654A-5598-A8F8-30977E81073B